

# Technical Onboarding for RyDE v1.0.2

July 2022

[Start here →](#)



## Content

Welcome .....	3
Overview.....	3
1. Customer Service Portal Account.....	3
2. General Information .....	3
3. PGP Key .....	4
4. SSH Keys.....	4
5. Deposit Upload .....	5
5.1. Deposit preparation .....	5
5.2. Deposit upload to DENIC Services SFTP server .....	6
6. ICANN's Naming Services portal (NSp) .....	6
6.1. Overlap .....	7
6.2. Switch to DENIC Services .....	7
6.3. Process for updating RRI DEA Credentials according to ICANN .....	8
7. Deposit Reporting.....	8
I - Contact and Support.....	9

## Welcome

Welcome to our Data Escrow Service. We are DENIC Services, a fully owned subsidiary of DENIC eG and rely on 20 years of experience in Internet technology.

As a Designated Escrow Agent for ICANN accredited Registrars and Approved Escrow Agent for gTLD Registries we fulfil all specifications. We are fully GDPR compliant, ISO certified for information security and business continuity management. Further our Data Escrow Service won the eco://award for innovation in domain name business.

## Overview

This manual describes the onboarding process to our system through our Customer Service Portal. This is the first part, contracting.

During the onboarding process you will always have the menu on the left side with the next steps. A completed step has a checkmark. All steps must be completed.

## 1. Customer Service Portal Account

Our main contact will receive an admin-account for our customer service portal. The credentials will be sent by mail as a one-time-link. By clicking on the link a password reset will be forced. This process is protected by a second factor through your provided mobile phone number. This is your master account which can add more users over the admin section described later. In any cases regarding the portal this account will be contacted.

## 2. General Information

The general information section consists of three pages to prepare your account and the contract. Through three pages company information will be collected to prefill further forms.

Please only choose a Backend Operator (BERO) if you don't upload with your own account.

General Information	<input checked="" type="checkbox"/>
PGP Key	<input type="checkbox"/>
SSH Keys	<input type="checkbox"/>
Deposit Upload	<input type="checkbox"/>
Naming Services Portal	<input type="checkbox"/>

### General Information

#### Welcome to Data Escrow by DENIC Services.

Thank you for submitting all general information. This step is completed.  
You may now continue completing the steps on the left menu.

### 3. PGP Key

Here you may provide us your public PGP key. The key needs to be valid. Your PGP key is necessary for uploading a deposit successfully. This step is completed by your Backend Operator (BERO) if you chose one.

- General Information
- PGP Key
- SSH Keys
- Deposit Upload
- Naming Services Portal

#### PGP Key

Please provide us your public PGP key. The key needs to be valid. Your PGP key is necessary for uploading a deposit successfully.

```
-----BEGIN PGP PUBLIC KEY BLOCK-----
Version: BCPG C# v1.6.1.0

mQENBGBknd8BCACbBAgGzgZyeK6HukpEP44QACzNi9IQUBvbwWh9DaUBCWBUeHnz8
GjhwXmG3GMCQWQ7JCP5qjDH44A3uMOcIVQ50lwZVqp88OKkzK2P298/18x5heJcTv
jD5vdiZiCL59jMykj2BfUjz21D2zJ03iVprA5WjlywKvz7JQeHf8rp3Vjg0zI
yGillfD0lmlrb1yeobhP4iBIN2MtFIDxyiBpXGDNBIMS8BR0a8yn1gQRnS+OB0bp
CIN1nkLZiOLZuhoummoyLcTauYnEH8Yz7dy71ovmhW+tCk6rcd7mkqboXevRIH3p
of4eOWOMSIFomb3oGN89Zbrnt6S8kdc/dMZvABEBAAGOAikBHAQQAQIABgUCYGSd
3wAKCRDh8KcLHBkdNLRB/4tS29XAMe9mmqmLMsqf40EZ271W/bb5GkL+3/R8js
3X3E8cZzJ9YL2NslcCn2DHlIPMj55YN6wQZucdtr3c45vv6Br4R+7C5+PFt6l/d+
```

Save

For creating a PGP Key we recommend to use GnuPG:

- <https://gnupg.org> (Linux)
- <https://www.gpg4win.org> (Windows)

Validation period of at least five (5) years and length 2048 Bit

#### Algorithms

RIPEMD160withRSA	SHA256withECDSA	SHA512withECDSA
RIPEMD160withECDSA	SHA384withDSA	SHA256withRSA
RIPEMD256withRSA	SHA384withECDSA	SHA384withRSA
SHA256withDSA	SHA512withDSA	SHA512withRSA

### 4. SSH Keys

Here you can add your public SSH key for logging in to our server. You may provide more than one key.

- General Information
- PGP Key
- SSH Keys
- Deposit Upload
- Naming Services Portal

#### SSH Key

Please provide us your public SSH key(s). The key(s) need(s) to be valid. We support more than one key if you work with different keys on different servers.

+

ID	SSH Key	Edit
No key added		

You can use ssh-keygen at the command line for creating the SSH Key.

As an example: `ssh-keygen -t rsa -b 4096`

## Server Upgrade or Changes

### Requirements

If you experience trouble using the SSH Key after you have updated SFTP Servers, you can try to use some of this:

1. Generate a new key with the secure algorithm ed25519 and exchange the stored public key in the CSP. (Recommended)
2. If you want to continue using the old RSA key, you can change the ~/.ssh/config to hard-activate the RSA algorithm again, see the Potentially-incompatible changes section in the release note on <https://www.openssh.com/txt/release-8.8>
3. Expand the SFTP command with the argument -oPubkeyAcceptedAlgorithms+=ssh-rsa, this will allow RSA support directly for this connection and the FTP connect should work again.

## 5. Deposit Upload

On this page you will find your login information as well as information about deposits, preparation and upload. Our manuals are also available for download. Please do not forget to check the checkbox, that you have read the manual.

### Techniu

- [General Information](#)
- [PGP Key](#)
- [SSH Keys](#)
- [Deposit Upload](#)
- [Naming Services Portal](#)

### Deposit Upload

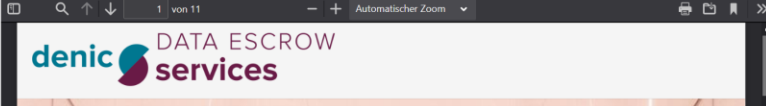
**Credentials for uploading to our SFTP server**

Please use the username and your SSH key to login to our SFTP server.

FQDN: **escrow.denic-services.de**

Username:

Manual has been read



### 5.1. Deposit preparation

Please prepare your deposit files according to the official ICANN specifications:

#### ICANN Registry Agreement

#### XML Schema by IETF (rfc9022 and rfc 8909)

<https://datatracker.ietf.org/doc/rfc9022/>

<https://datatracker.ietf.org/doc/rfc8909/>

You have to use our public production key to encrypt the deposit:

[DENIC Services RyDE public PGP Key.](#)



## 5.2. Deposit upload to DENIC Services SFTP server

Please use the provided Login and your SSH Key for uploading to our SFTP server.

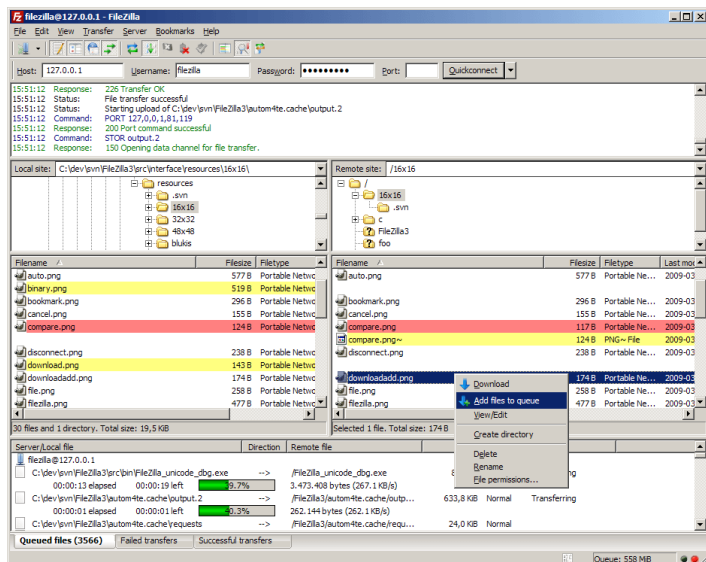
FQDN: escrow.denic-services.de

Login: e.g. RyDE-example

(provided in our Customer Service Portal)

You may use any SFTP application via terminal or client such as FileZilla:

### FileZilla Project.



The number of simultaneous connections must be set to 1.

How to set it in FileZilla:

“Transfer Settings” → “Limit number of simultaneous connections” and set to 1.

After successful upload to the DENIC Services server the overlap period can run according to the Transition Plan.

## 6. ICANN’s Naming Services portal (NSp)

Please login to the Naming Services portal to update the ONBIR credentials for the transition day.

Go to: <https://portal.icann.org>

General Information	<input checked="" type="checkbox"/>
PGP Key	<input checked="" type="checkbox"/>
SSH Keys	<input checked="" type="checkbox"/>
Deposit Upload	<input checked="" type="checkbox"/>
Naming Services Portal	<input type="checkbox"/>

### Naming Services Portal

Support contact: [escrow@denic-services.de](mailto:escrow@denic-services.de)

Below you can find your ONBIR credentials for the Naming Services Portal.  
After changing your credentials on the Naming Services Portal, please come back and confirm.

ICANN ONBIR Username	ererevew_dea	<input type="button" value="Generate new"/>
ICANN ONBIR Password	fWz3aQ9kt2KNh4cB	

#### RRI DEA IP Address

RRI DEA IP Address 1: 81.91.160.0/24
RRI DEA IP Address 2: 81.91.173.0/24

## 6.1. Overlap

The overlap period is taking place to ensure the uploading to the new Data Escrow Agent without problems and interruptions. During this time, the deposits have also to be submitted to the current Data Escrow Agent.

The overlap of 30 days is only optional and may be shortened. We recommend at least one successful deposit to our system before switching the ONBIR credentials.

## 6.2. Switch to DENIC Services

At the end of the overlap period, you will have to change the ONBIR credentials in the Naming Services portal. You will get these credentials from our Customer Service Portal.

### ONBIR credentials

Login: e.g. tld_dea
Password: can be found and changed in our Customer Service Portal

### RRI DEA IP Addresses

RRI DEA IP Address 1: 81.91.160.0/24
RRI DEA IP Address 2: 81.91.173.0/24

### Data Escrow Agent Contact

<p>The Secondary Contact is optional. You can also use the Primary Contact as Secondary Contact with different e-mail-address.</p> <p>Data Escrow Agent: DENIC Services GmbH &amp; Co. KG Address: Heinrich-Hertz-Str. 6, 64295 Darmstadt, Germany Primary Contact: DENIC Services Data Escrow Primary Contact Phone: +49-6151-62 92 710 Primary Email Address: <a href="mailto:escrow@denic-services.de">escrow@denic-services.de</a></p> <p>Data Escrow Agent: DENIC Services GmbH &amp; Co. KG Address: Heinrich-Hertz-Str. 6, 64295 Darmstadt, Germany Secondary Contact: DENIC Services Data Escrow Secondary Contact Phone: +49-6151-62 92 710 Secondary Email Address: <a href="mailto:info@denic-services.de">info@denic-services.de</a></p>
--

### 6.3. Process for updating RRI DEA Credentials according to ICANN

1. Login to the Naming Services portal.
2. Select your TLD to update.
3. Click on **RRI DEA Credentials** button.
4. A pop-up window will be showed "SUBMIT RRI DEA CREDENTIALS".
5. Please note the Username must show the
  - i. "tld"
  - ii. follow by an underscore "\_"
  - iii. follow by "dea".
6. Type the new password to share with the DEA.
7. You may select the checkbox "Show Password?" in order to see what you are typing.
8. Click **Submit** button.
9. A success message will be displayed.

Date: 28 August 2019

## 7. Deposit Reporting

After ICANN accepted the ONBIR update and change the data in their systems the reporting will officially executed by DENIC Services.

You can stop delivering deposits to your old Data Escrow Agent now.

Congratulations!

Onboarding complete

### Thank you!

You have successfully completed the onboarding.

All of your information is saved in our systems and you are ready to start uploading your deposits.

For further questions please contact our Support: [escrow@denic-services.de](mailto:escrow@denic-services.de).

To access our Customer Service Portal, please click here:

[Enter Customer Service Portal](#)



## I - Contact and Support



**DENIC Services GmbH & Co. KG**  
Heinrich-Hertz-Str. 6  
64295 Darmstadt  
Germany



**Phone** +49-6151-62 92 710



**Fax** +49-6151-62 92 711



**E-Mail** [escrow@denic-services.de](mailto:escrow@denic-services.de)



**Internet** <https://www.denic-services.de/en>